



**San Luis Obispo County
Department of Social Services
Family Prevention Services**

**CALIFORNIA WORK OPPORTUNITIES
AND RESPONSIBILITY TO KIDS
(CALWORKs)**

Structured Decision Making

Belinda Benassi
Child Welfare Services Program Manager
Structured Decision Making Coordinator

Demographics

- ◆ We are a smaller, largely rural county with a total population of 269,637 residents .
- ◆ The medium household income is: \$55,638(2009)
 - ◆ California: \$58,925
- ◆ The poverty rate in SLO: 13.2% (2009)
 - ◆ California: 14.2% (2009)
 - ◆ Unemployment rate: 9% (May 2011)
- ◆ Expensive place to live
 - ◆ Median home price: \$513,460 (Jan 2011)
 - ◆ Average 2 bedroom apartment: \$1,081/month
 - ◆ Section 8 waiting list: 1988 on the waiting list as of January 2011. The list is currently closed.

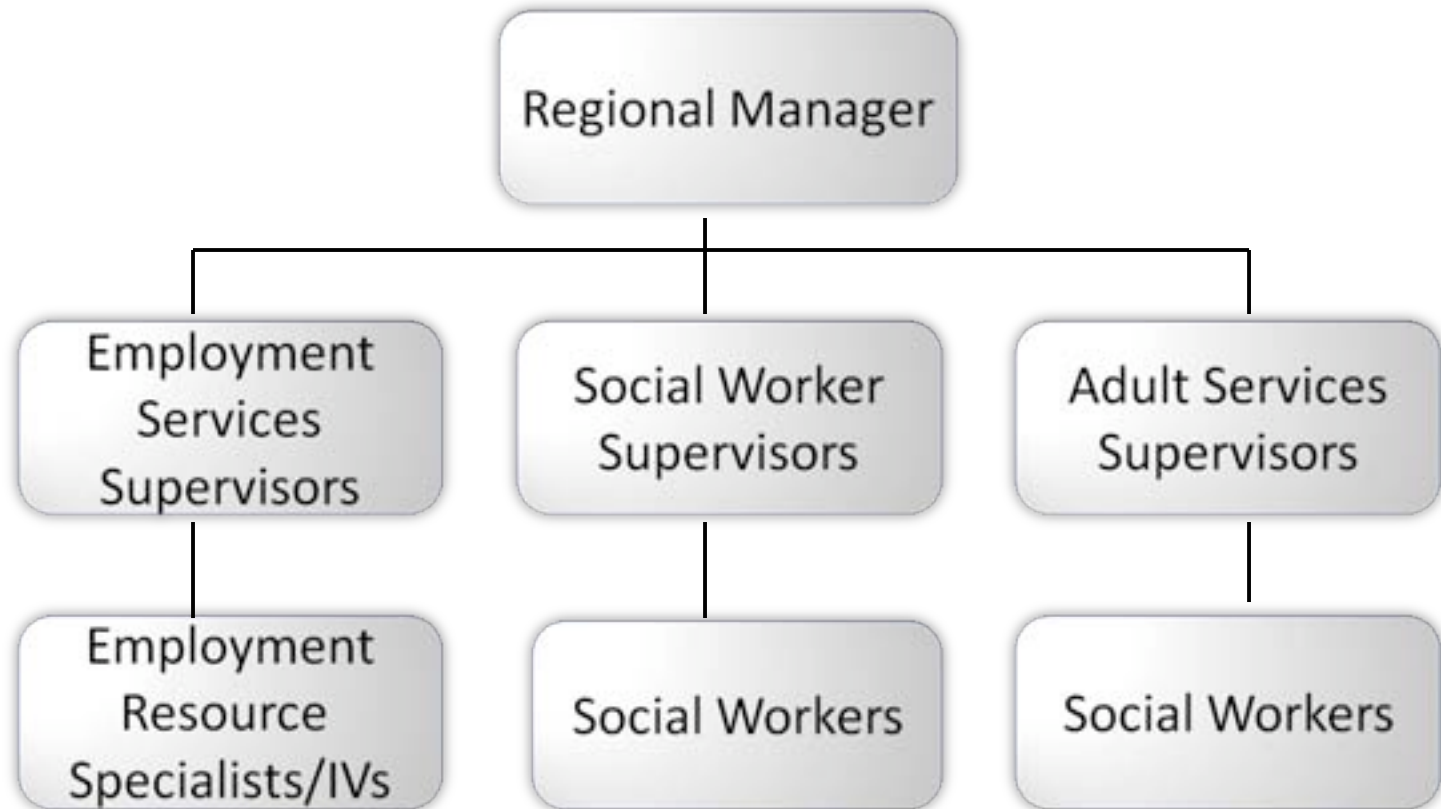


Sources: 2010 US Census, 2011 SLO Economic Profile, ca.gov, CA Association of Realtors and SLO County Housing Authority

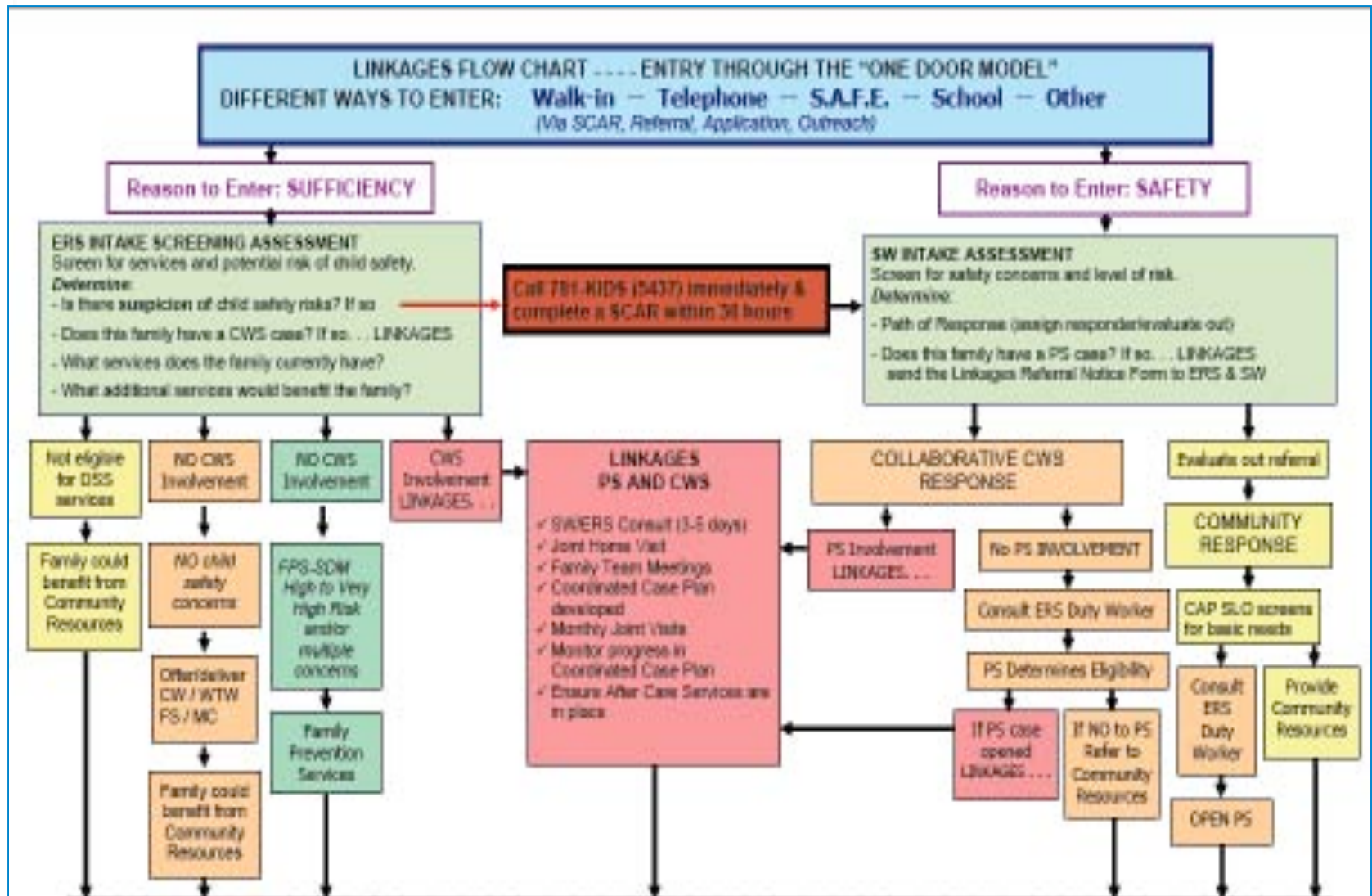
Department of Social Services Five Regional Offices



Regional Offices: Integrated Approach



Linkages: One Door Model





Community Resources

By coordinating CalWORKs & Child Welfare Services, we enhance the family's ability to access other resources earlier, such as:

- **Domestic Violence services**
- **Mental Health services**
- **Drug & Alcohol services**
- **Parent Connection**
- **Father Involvement groups**
- **Parent Mentors**
- **Employment Opportunities**
- **Housing services**
- **Supportive Services**
- **Family Advocates**
- **Youth support**
- **Transportation**
- **Food Bank**
- **In-Home care**
- **Counseling services**
- **Child & Adult care**



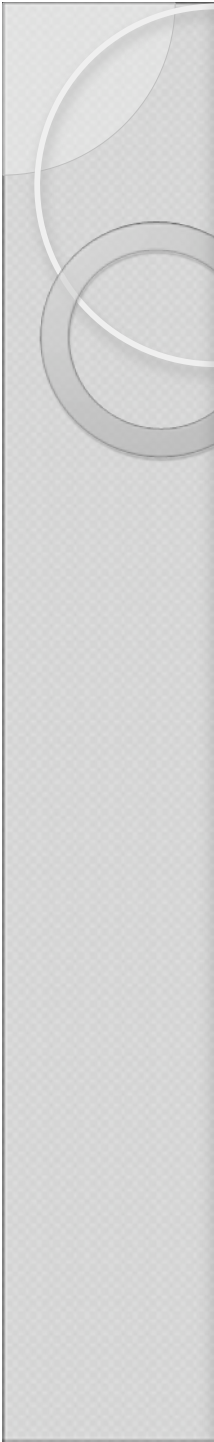
Participant and Child Welfare Services

- Participant Service Components:
 - CalWORKs/Welfare-to-Work/CalFresh/Medi-Cal
 - Foster Care/CalFresh/Medi-cal
 - General Assistance/CalFresh/Medi-cal
- Child Welfare Service Components:
 - Hotline/Intake
 - Emergency Response
 - Dependency Investigations
 - Family Maintenance/Family Reunification/Permanent Placement
 - Licensing
 - Adoptions
- Participant and Child Welfare Services staff are co-located in each office and Linkages is emphasized in our departmental structure.



Family Prevention Services Structured Decision Making Assessments

- **Informed Consent** – documents the family’s agreement to participate in the Family Prevention Services Screening Assessment
- **Family Prevention Services Screening Assessment** – identifies families who have low, moderate, high or very high risk of future child abuse or neglect
- **Family Strengths and Needs Assessment** – prioritize prevention services at the Family Team Meeting to develop a Welfare-to-Work or Family Prevention Services Plan
- **Family Prevention Services Screening Reassessment** – re-evaluates the risk level of future child abuse or neglect and guides the decision to continue with voluntary prevention services
- **Family Strengths and Needs Reassessment** – re-evaluates the Family Prevention Services plan for families who continue to have a high or very high risk for future child abuse or neglect



CalWORKs

Structured Decision Making

Assessments

- Provide a standardized opportunity to recognize when the risk of future child maltreatment is more likely
- Support collaborative efforts to provide family prevention/self-sufficiency services
- Reduce risks of future child maltreatment and strengthen the family



CalWORKs Family Prevention Services Eligibility

All CalWORKs families who do not have a current Child Welfare Services case or referral, including exempt and child-only cases are eligible to be screened
for Family Prevention Services

Informed Consent

Documents the family's agreement to participate in the Family Prevention Services Screening Assessment

Who should complete?

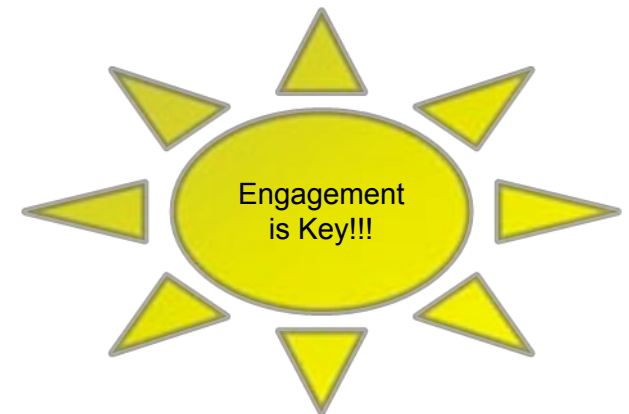
Employment Resource Specialist

Which cases?

- All CalWORKs families
- No current CWS activity
- Includes Exempt and Child Only participants

When to complete?

- Child Only or Exempt families at the face-to-face interview or within 30 days from approval
- Welfare-to-Work families at the face-to-face interview, Appraisal, Job Club or within 30 days from approval
- Current open/ongoing cases, engage the family at the next monthly contact





Family Prevention Services Screening Assessment/Reassessment

Identifies families who have low, moderate, high or very high risk of future child abuse or neglect

Who should complete?

Employment Resource Specialist

Which cases?

- All CalWORKs families
- No current CWS activity
- Includes Exempt and Child Only participants

When to complete?

- Child Only or Exempt families at the face-to-face interview or within 30 days from approval
- Welfare-to-Work families at the face-to-face interview, Appraisal, Job Club or within 30 days from approval
- Current open/ongoing cases, engage the family at the next monthly contact

Reassessment:

- Reviewed at least every 90 days



Family Strengths and Needs Assessment/Reassessment

Who should complete?

Employment Resource Specialist and Employment Resource Specialist IV with
the
family

Which cases?

All CalWORKs cases with an open prevention services component

When to complete?

Initial:

Family Team Meeting

Reassessment:

Complete only if the family scored high to very high on the Family Prevention
Services

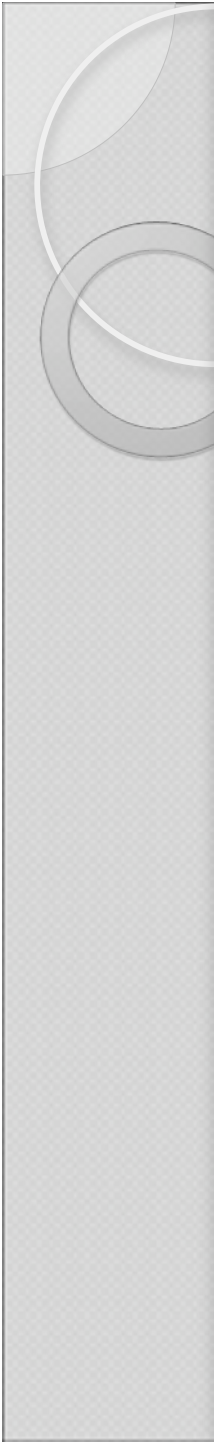
Screening Reassessment

Family Team Meeting



Family Prevention Services Benefits for Families

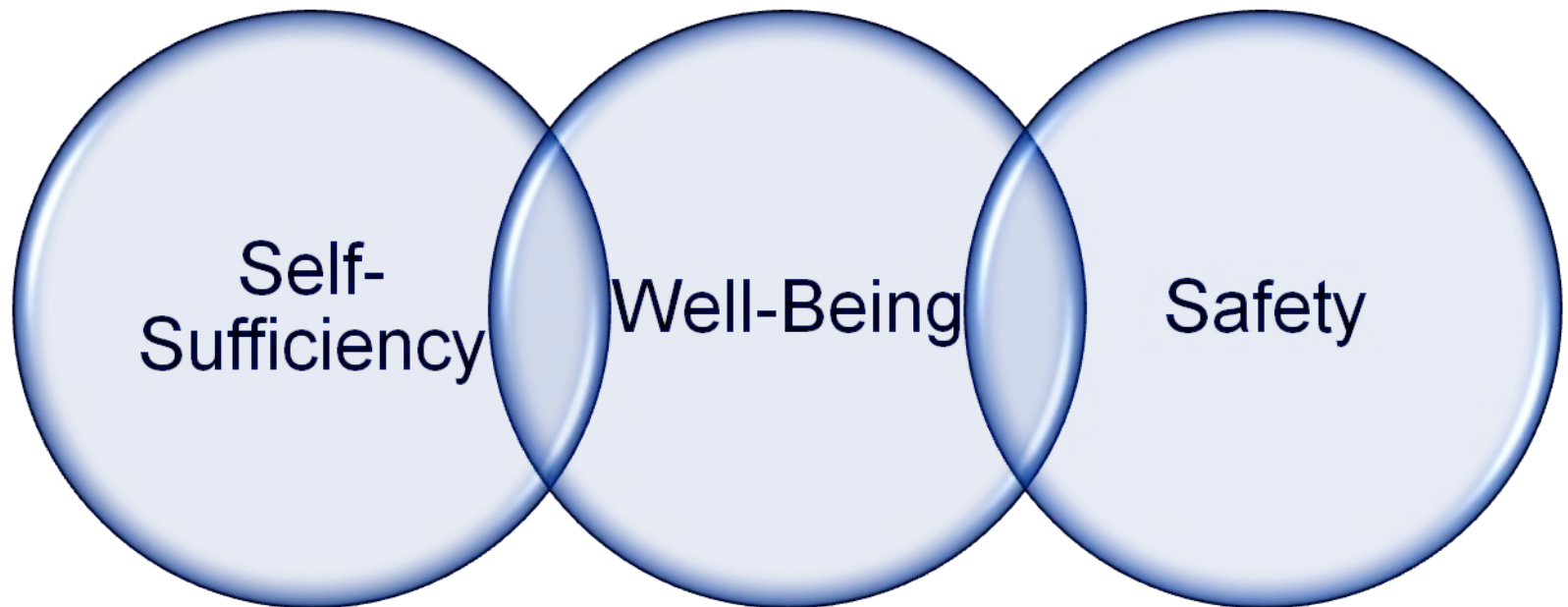
- For Welfare-to-Work families:
 - Services are focused on priority need areas
 - Increased contact by the Employment Resource Specialists
 - Family Prevention Services activities may count toward WTW hours
 - “Good Cause” considered for prevention efforts prior to sanctioning
- For Exempt and Child Only families:
 - Increased contact by the Employment Resource Specialists
 - Access to prevention supportive services



CalWORKs

Family Prevention Services

Structured Decision Making





Thank You!!

Belinda Benassi
Child Welfare Services Program Manager
Structured Decision Making Program Coordinator

805-781-1841
bbenassi@co.slo.ca.us