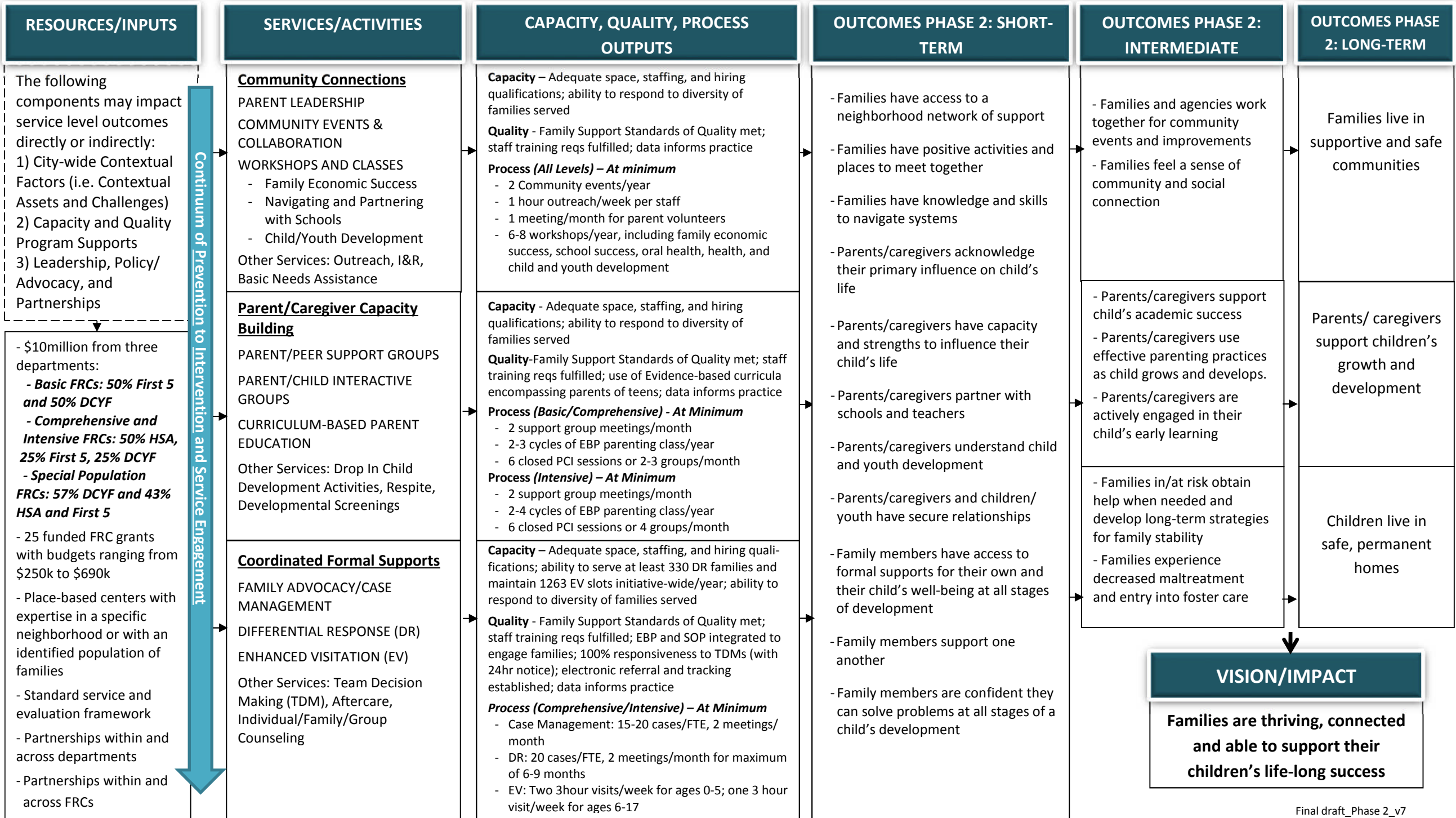


# FAMILY RESOURCE CENTER INITIATIVE PROGRAM DESIGN LOGIC MODEL



# FAMILY RESOURCE CENTER INITIATIVE THEORY OF CHANGE

## CITY-WIDE CONTEXTUAL FACTORS

Assets

- Strong Network of Community-based Organizations
- Willingness to partner among and between CBO's and city/county departments
- Commitment to policies that support children and families
- Rich diversity, strength and resiliency among our families and communities

Challenges

- High cost of living and lack of affordable housing makes meeting basic needs difficult for families
- Insufficient educational and career pathways to meet families employment and job readiness needs
- Disparities in school readiness and educational outcomes among children and youth
- Disparities in family stability and overall health and well-being
- Family exposure to community and domestic violence often prolonged and multi-generational

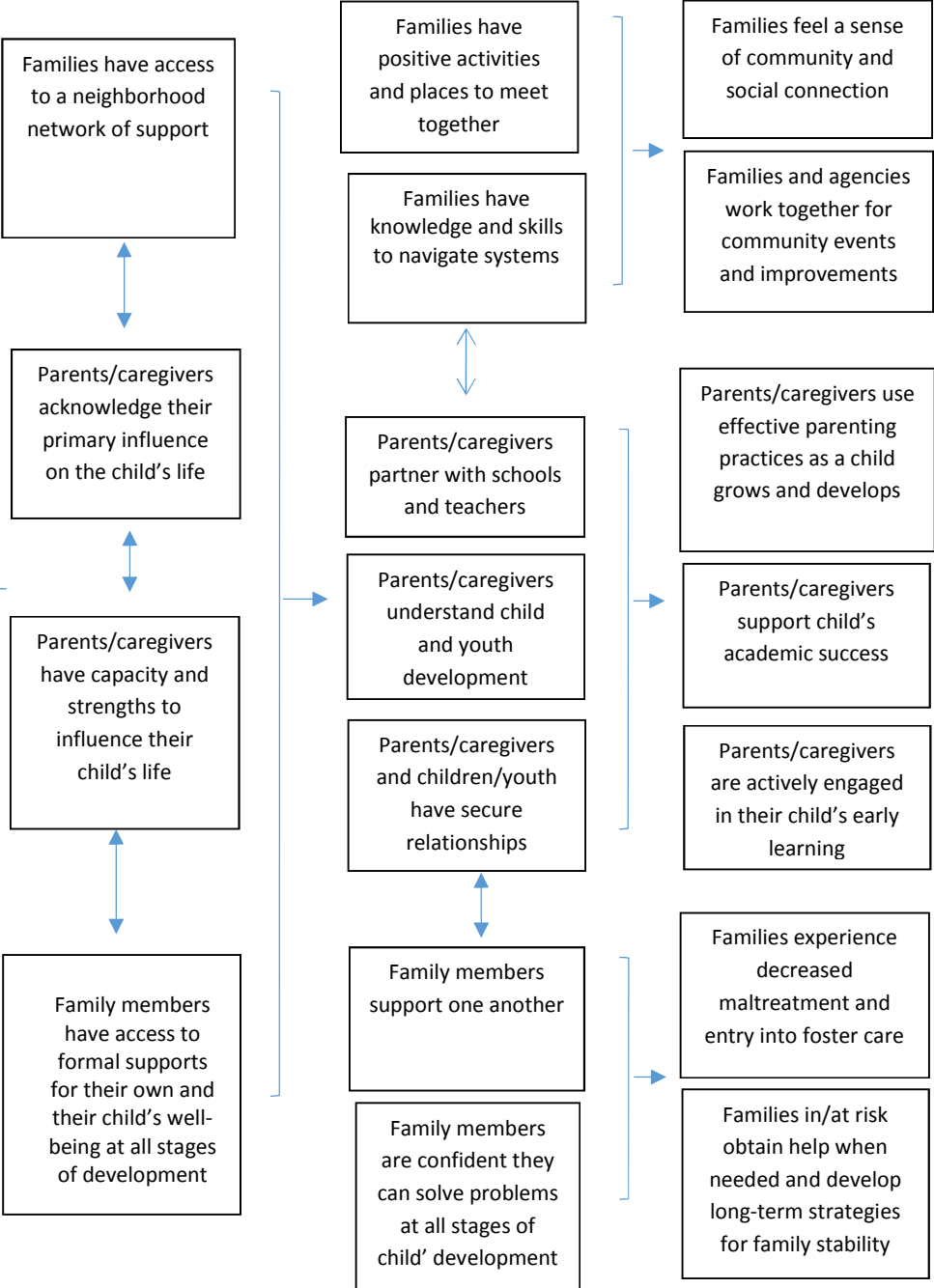
## INTERVENTION STRATEGIES

**STRONG,  
EFFECTIVE,  
CULTURALLY  
RESPONSIVE  
PROGRAM  
DESIGN**

**CAPACITY AND  
QUALITY  
PROGRAM  
SUPPORTS**

**LEADERSHIP  
POLICY  
ADVOCACY  
PARTNERSHIPS**

## PRE-CONDITIONS FOR CHANGE



## LONG-TERM OUTCOMES