

Older Adults Behavioral Health Resources Lunch & Learn

Sarah Steenhausen, Deputy Director
California Department of Aging

Gretchen Schroeder
Heather Miao
Chapman Consulting



Agenda

- Older Adult Behavioral Health
- Overview of Proposition 1 and the Behavioral Health Services Act
- California Department of Aging's Proposition 1 Toolkit
- Proposition 1 and BHSA Resources

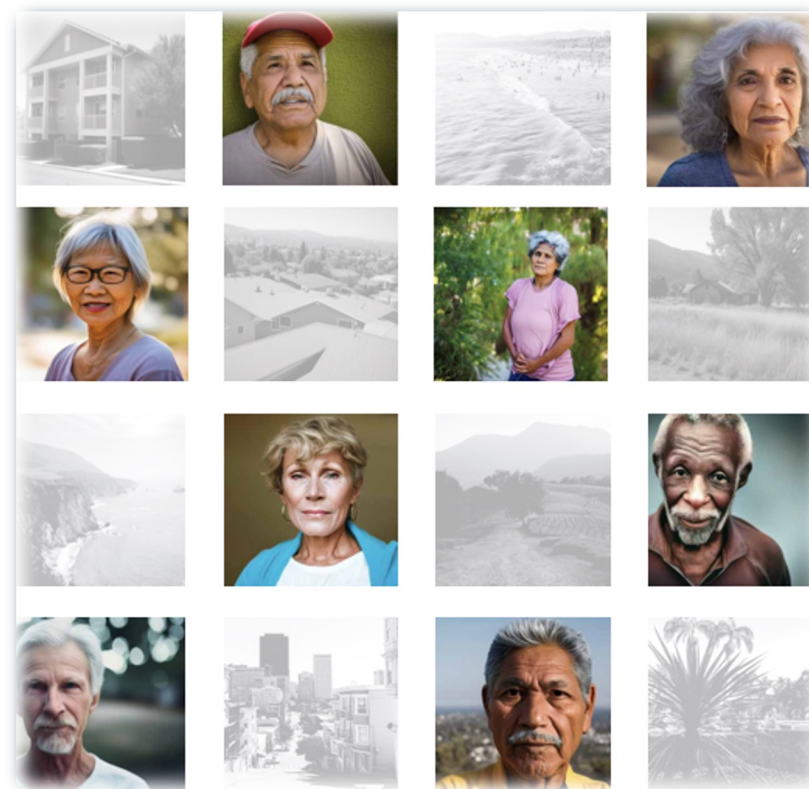




Older Adult Behavioral Health

*Sarah Steenhausen, Deputy Director
California Department of Aging*

- **The Need**
- **The Problem**
- **Opportunities**
- **Progress**



The Need: Karen's Story



The Problem

- **Unmet need**
- Stigma
- Higher rates of suicide
- Social isolation
- Equity considerations



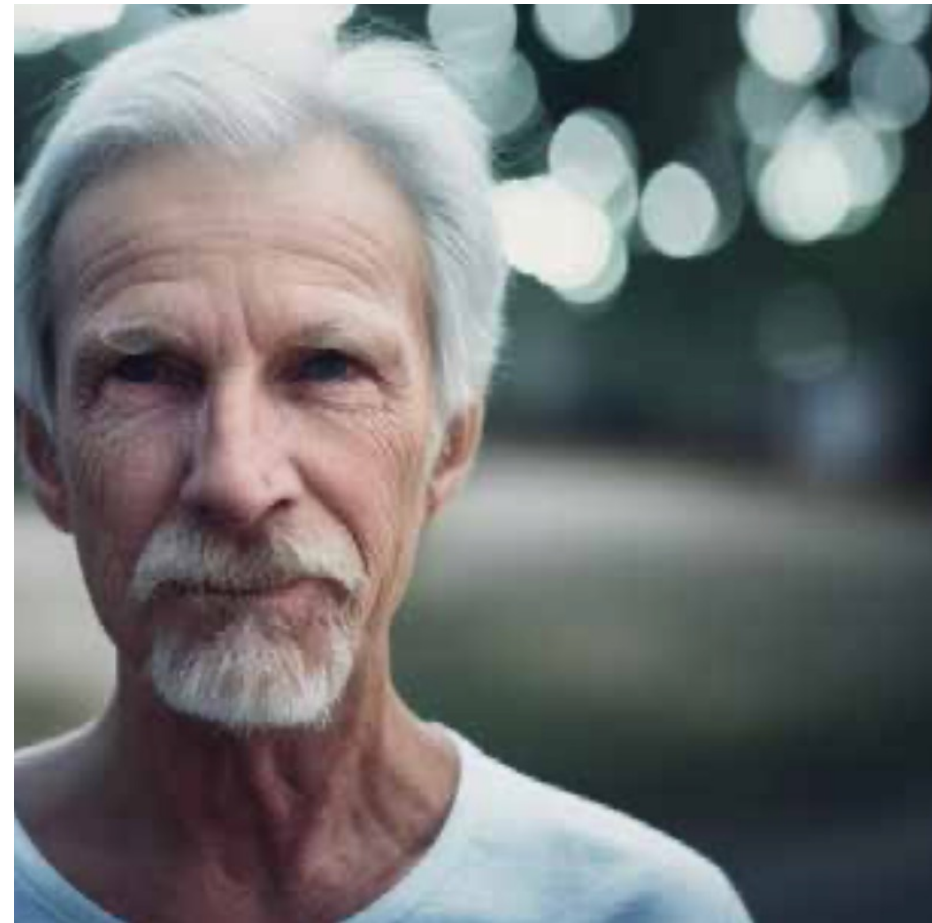
The Problem

- Unmet need
- **Stigma**
- Higher rates of suicide
- Social isolation
- Equity considerations

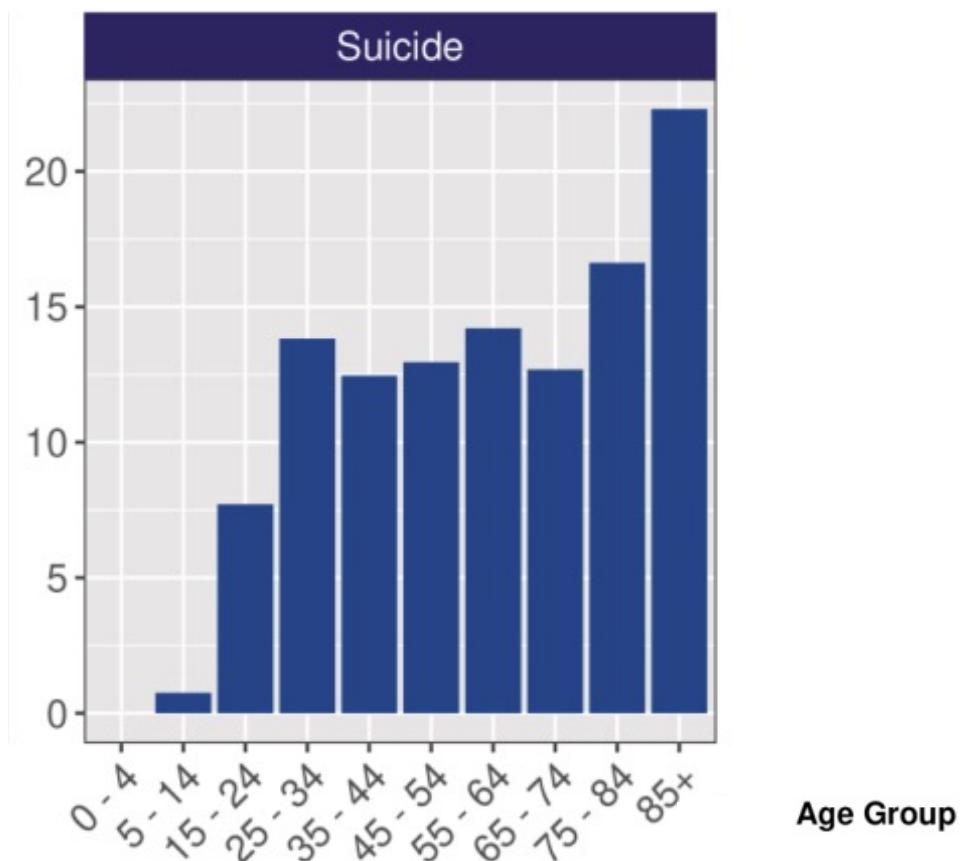


The Problem

- Unmet need
- Stigma
- **Higher rates of suicide**
- Social isolation
- Equity considerations



Death Rates for Suicide by Age Group, 2022



The Problem

- Unmet need
- Stigma
- Higher rates of suicide
- **Social isolation**
- Equity considerations



Spotlight: California's First Statewide Older Adult Consumer Survey



CA Department of Aging's 2023 Community Assessment Survey of Older Adults: 17,000 Surveyed

- 40% reported that feeling lonely or isolated was a problem
- Approximately 45% reported feeling depressed
- Nearly half of those surveyed are dealing with recent grief or loss



Spotlight: California's Behavioral Health Older Adult Survey Report



Insure the Uninsured Project (ITUP) and CA Department of Aging's 2025 Survey:

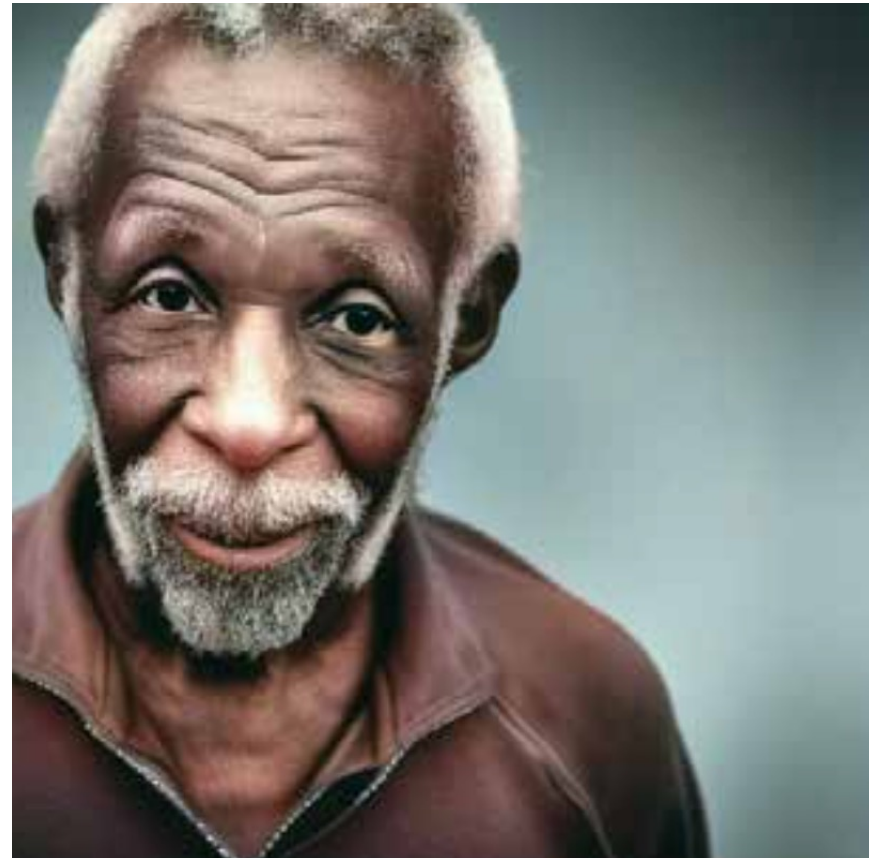
225 local/state government, nonprofits, community organizations, and health plans surveyed

- #1 Challenge: Social isolation and loneliness (60% of respondents)
- #1 Service Gap: Lack of behavioral health services focusing on older adults
- 56% believe behavioral health services should be delivered where older adults gather



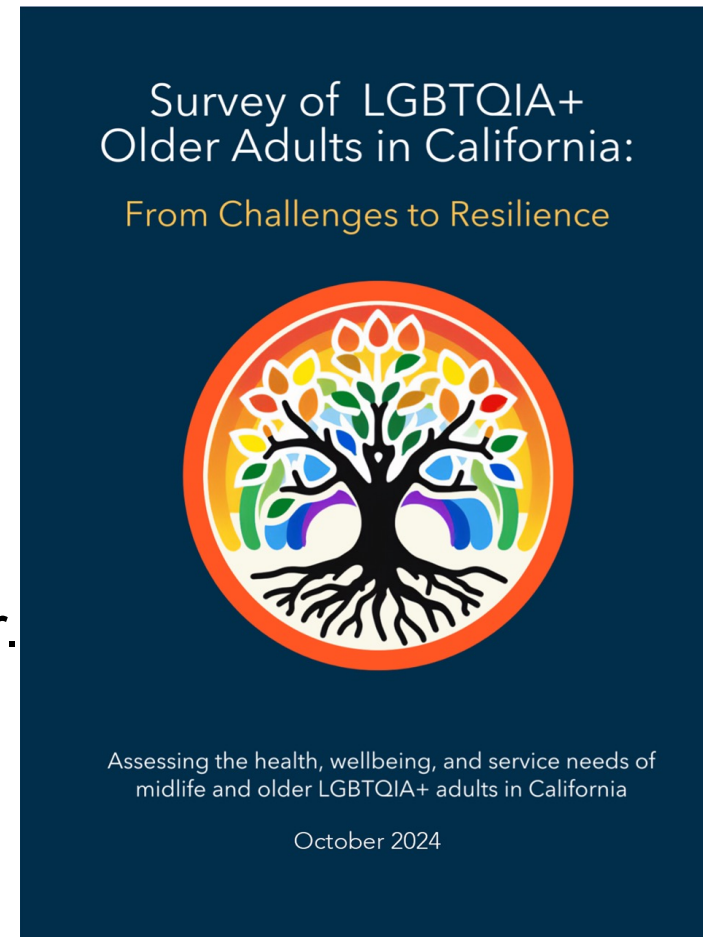
The Problem

- Unmet need
- Stigma
- Higher rates of suicide
- Social isolation
- **Equity considerations**



Spotlight: California's First Statewide Study of LGBTQIA+ Older Adults

- Nearly 50% had experienced a traumatic event in their lifetime
- One in Four had symptoms consistent with Post Traumatic Stress Disorder
- One in ten reported serious thoughts of suicide in the past year.



What We Heard: Listening Sessions

- Social Isolation
- Stigma
- Workforce challenges
- Cultural Relevance
- Lean into Community
- Access



Meeting Older Adult Behavioral Health Needs

- Focus on Resilience
- Address stigma
- Tailor messaging– culturally responsive
- Encourage recognition of need
- Increase social support, social connectedness



Opportunities: Behavioral Health Services Act – local engagement



- **The need:** Education and Engagement at Local Network
- **Partnership:** West Health and Chapman Consulting



Overview of Proposition 1 & BHSA

Overview of Proposition 1

- In March 2024, California voters passed Proposition 1. It has two components:
 - Behavioral Health Services Act (BHSA)
 - Behavioral Health Infrastructure Bond Act (BHIBA)
- The BHSA modernizes and expands upon the original Mental Health Services Act (MHSA) of 2004.
- The BHIBA provides funding for treatment beds, supportive housing, and community sites. It directs funding for housing for veterans with behavioral health needs.
- Proposition 1 is intended to enact sweeping behavioral health transformation.

Overview of the BHSA

- The BHSA reshapes how counties plan, fund, and deliver behavioral health services.
- Key elements include:
 - Builds on the original MHSA by broadening the focus to include mental health and SUD treatment
 - Requires counties to develop a County Integrated Plan (IP) every three years with community input
 - Requires annual updates to track and adjust strategies
 - Counties must conduct ongoing community engagement across all stages of planning

BHSA Funding Structure

Under the BHSA 90% of county allocations must be used across three major components:

1. **Housing Intervention Programs (30%)** – can be used to fund supportive housing designed for older adults
2. **Full-Service Partnership Programs (35%)** – intensive services for those with serious needs, including older adults at risk of institutionalization
3. **Behavioral Health Services and Supports (BHSS) (35%)** – includes Early Intervention Programs; 49% of these funds can serve adults of any age

Counties may ask to transfer funds between the three components to change their funding allocation percentages. Counties may also request exemptions to some BHSA requirements.

Important Dates

- **January 1, 2025**
 - Stakeholder engagement requirements began
- **March 31, 2026**
 - Draft County Integrated Plans (IPs) are due
 - Counties must provide at least 30 days of public review of the draft IP
- **June 30, 2026 (and every three years after)**
 - Final County IP due to DHCS
- **Annually (Years 2 & 3 of each cycle)**
 - Annual IP updates




Opportunities in the Behavioral Health Services Act

- Opportunities for older adults to access new or enhanced services
 - Substance Use Disorder Services
 - Evidence-based and Community-defined Practices
 - Housing
 - Full-Service Partnerships
- Opportunities for Counties to invest in Older Adult Behavioral Health
 - Integrated Planning
 - Age-based Data
 - Stakeholder Engagement
 - Priority Populations
 - Flexibility to Innovate

State-Level Investments and Initiatives

- **Workforce initiatives:**
 - CA Department of Health Care Access and Information
- **Population-Based Prevention:**
 - CA Department of Public Health
- **Development of Outcome Measures:**
 - CA Department of Health Care Services



Advancing OABH in Your County: Proposition 1 Toolkit

Proposition 1 Toolkit Overview

1. The Growing Behavioral Health Needs for Older Adults
2. Stakeholder Engagement: Get a Seat at the Table
3. Stakeholder Engagement Checklist
 - BHSA funding allocations
 - BHSA service priorities
4. Early Intervention Programs Focusing on Older Adults
5. County Resources & Contacts
 - County points of contact for BHSA
 - County BHSA stakeholder meetings
 - County demographic profiles of older adults

Section 1: The Growing Behavioral Health Needs of Older Adults

- Raises Awareness
- Demonstrate the need
- Underscore the importance of investing in behavioral health for older adults



Section 2:

Stakeholder Engagement – Get a Seat at the Table

- Counties are required to engage with local stakeholders to develop each element of their Integrated Plan. Stakeholder groups include:
 - People with lived experience (including older adults and caregivers)
 - Area Agencies on Aging
 - Independent Living Centers
 - Community-based organizations serving diverse communities
 - Behavioral health providers, peers, and workforce representatives

Section 3: Stakeholder Engagement Checklist

- Education and Advocacy
 - Engage and partner with County Behavioral Health Departments, County Aging Departments, and County Board of Supervisors
 - Develop effective outreach and communication approaches
 - Coalition Building
 - Share an older adult's story
- Join County Committees and Workgroups
 - Engage in the planning process to advocate for funding for older adult services

Section 4: Appendices on Early Intervention Programs

- Counties are required to establish Early Intervention Programs
 - Designed to prevent mental illnesses and SUDs from becoming severe and disabling, while also addressing disparities in behavioral health outcomes.
 - Outreach to individuals and communities;
 - Access and linkage to medically necessary care; and,
 - Treatment services aimed at preventing the progression of behavioral health conditions
- Examples of Early Intervention Programs Targeting Older Adults

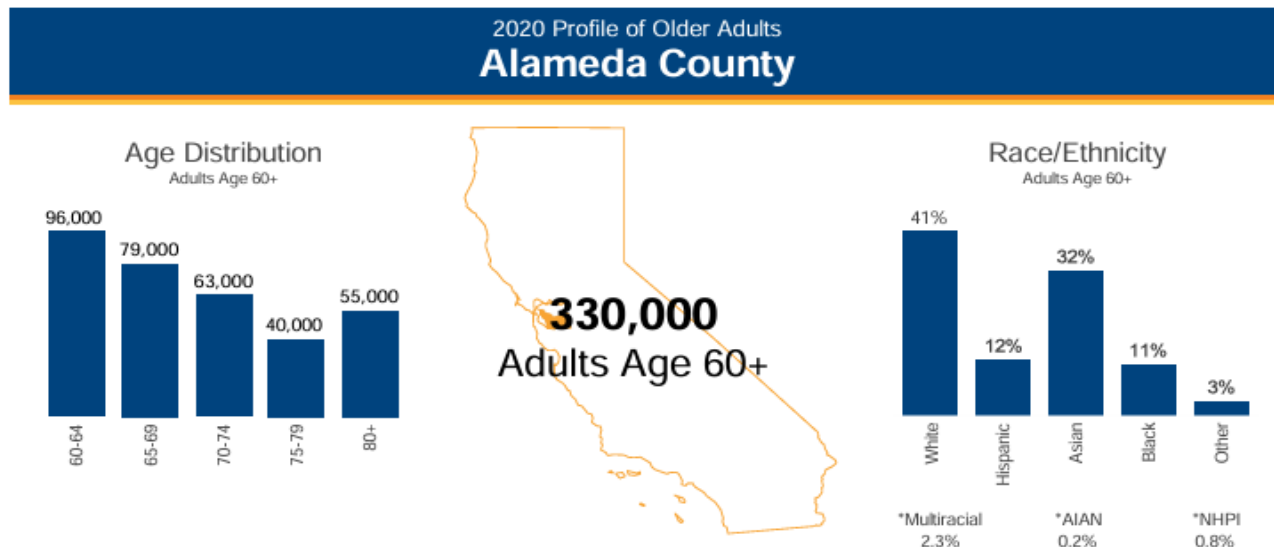
Section 5: County Resources and Contacts

- Directory of County Behavioral Health Transformation Contacts and Resources
 - County Behavioral Health Contacts
 - Board of Supervisors Contacts
- Stakeholder meetings relevant to BHSA
 - County MHSA/BHSA Advisory Meetings
 - Board of Supervisor Meetings



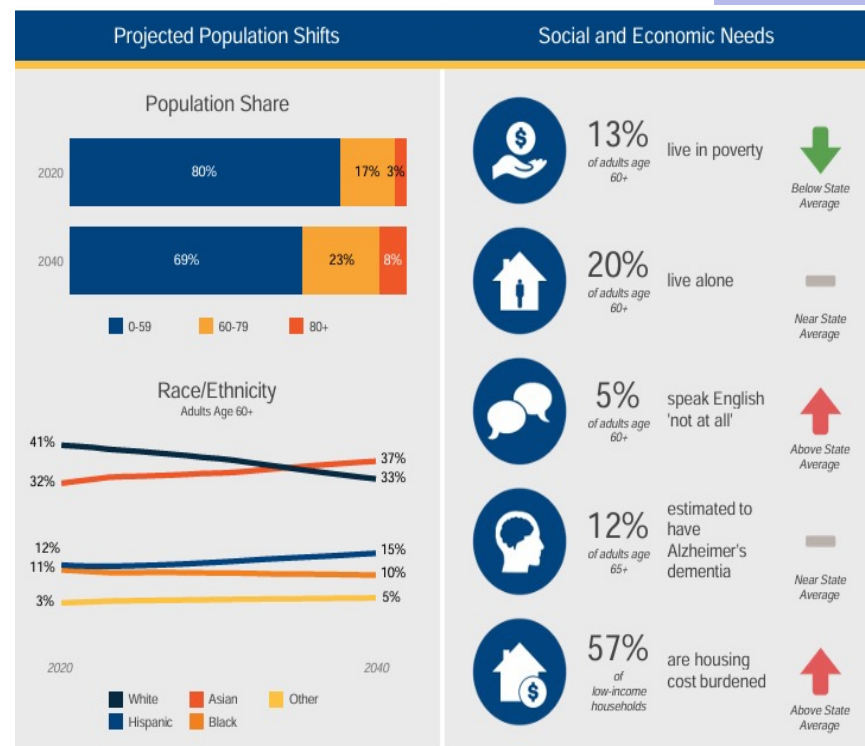
Section 5: County Resources and Contacts

The CA Department of Aging created county profiles of older adults in each county.



Section 5: County Resources and Contacts

- To review California's state-level profile and other county profiles, visit
 - [Master Plan for Aging Data Dashboard – County Profiles for Older Adults](#)



CDA Proposition 1 Toolkit

- CDA Older Adult Behavioral Health Resources for Providers
- County Toolkits
 - Designed to help providers, advocates, and community partners:
 - Understand local planning and funding structures under Proposition 1
 - Identify where and how to engage in stakeholder processes
 - Strengthen partnerships with behavioral health and aging departments
 - Advocate for programs that address the needs of older adults

Proposition 1 & BHSA

Resources

- DHCS Behavioral Health Transformation Webpage
 - Find more information on the BHSA, BHIBA, and Stakeholder Engagement Opportunities
- DHCS Behavioral Health Transformation – Stakeholder Engagement
 - Find details on upcoming public listening sessions, advisory committee meetings, and webinars
- BHSA County Policy Manual
 - Find important information and resources for counties regarding the draft Integrated Plan and final Integrated Plan
- DHCS Proposition 1 Fact Sheet
 - Provides an overview of Proposition 1 and its key elements

The background of the slide is composed of numerous overlapping squares of various sizes. The colors used are a muted blue, a dusty rose red, and a light lavender purple. Some squares are solid, while others are semi-transparent, creating a layered, geometric effect. The word "Questions" is centered in a bold, dark grey sans-serif font.

Questions

The image is a composite. The top half shows a person in a white shirt and dark tie holding a gold smartphone. The bottom half shows a hand with a silver pen pointing at a document with various charts and graphs. A solid blue horizontal band with the text 'THANK YOU' in white capital letters separates the two scenes.

THANK YOU